

Gustav Klimt 1862 - 1918



- Klimt was an Austrian symbolist painter
- He liked to use gold leaf in his paintings
- The *Tree of Life* is Klimt's only landscape painting using gold leaf
- With its branches reaching for the sky, the tree of life roots into the earth beneath, creating the connection between heaven and earth



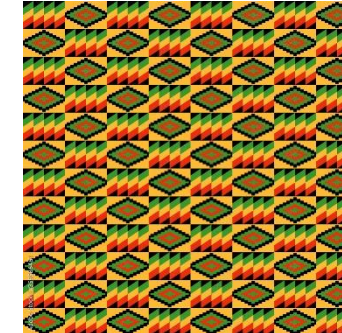
- The swirls and spirals of the branches are said to represent the twists and turns of life
- The women's dresses are heavily patterned, but still include the spirals and swirls that are on the tree.

Key Vocabulary

primary colours
collage
line
shape
pattern
spiral
swirl
pattern

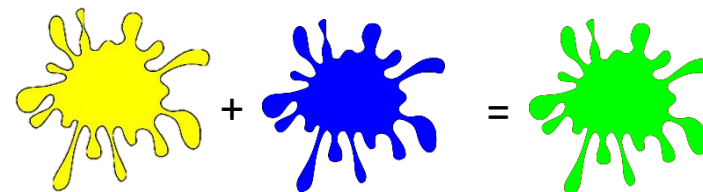
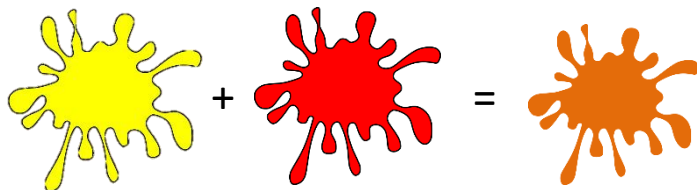
Kente Cloth

- Kente is a Ghanaian cloth made of handwoven strips of silk and cotton
- Historically the fabric was worn in a toga-like fashion by royalty
- In modern day Ghana, the wearing of Kente cloth has become widespread to commemorate special occasions
- The colours of Kente cloth represent the colours of the country, but also have different meanings e.g. red means political and spiritual moods
- Kente cloth uses repeating and geometric patterns
- The cloth represents high value



Key Vocabulary

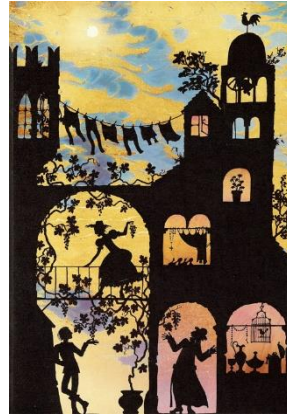
- cloth
- Kente
- Ghana
- repeating pattern
- geometric shape
- printing
- colour mixing



Jan Pienkowski 1936 - 1922



- Jan Pienkowski was a Polish born writer and illustrator of children's books.
- He is famous working with a British writer who retold some fairy tales from eastern Europe. Pienkowski drew complex silhouettes with colourful backgrounds.



Silhouettes

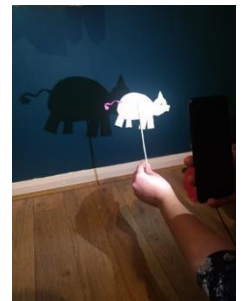
An outline, shadow drawing of an object, in one solid colour, is a silhouette. Usually silhouettes are profile portraits cut from black paper and pasted on larger white paper.



- You can create a silhouette by placing an object in front of a light.
- Some people create theatres and tell stories using silhouette puppets

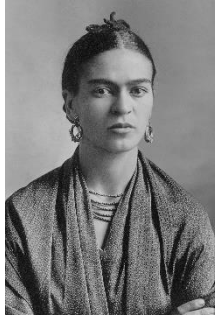
Key Vocabulary

- silhouette
- shadow
- light
- dark
- puppet



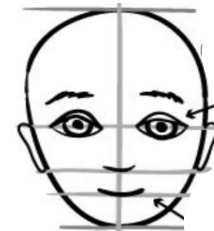
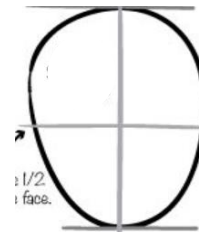
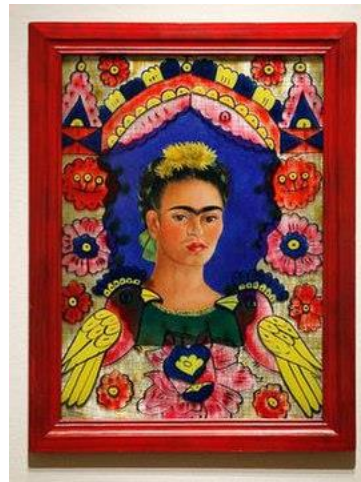
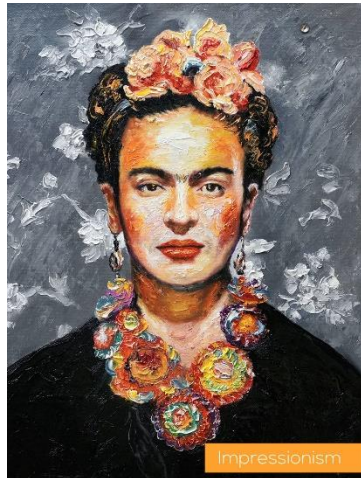
Frida Kahlo 1907 - 1954

A self portrait is a picture that someone draws of themselves.



- Frida Kahlo was a Mexican painter known for her many portraits, self portraits, and works inspired by the nature and artefacts of Mexico.
- Kahlo's work as an artist remained relatively unknown until the late 1970s
- By the 1990s Kahlo was considered an icon for feminism

- Kahlo's backgrounds were often very complex and were as important for her the portrait itself.
- She often had large flowers, fruit, birds and animals or leaves.



- When we draw a portrait we need to draw an egg shape for the shape of the face
- Draw a cross in the middle of the egg
- The eyes go on the horizontal line as well as the top of the ears

Key Vocabulary

self portrait
portrait
pastel
background
features
proportion

Key Vocabulary

colour
mood
landscape
seascape
brushstrokes

JMW Turner 1775- 1851



- Turner was an English painter, who became one of the most respected painters of all time.
- Turner was inspired by the light he found on the Kent coast.
- He said that *“the skies over Thanet are the loveliest in all Europe”* and painted many seascapes around the Margate area

A landscape is picture of an outside scene.

A seascape is a picture of the sea.

- Turner’s paintings often used the colours red, yellow, and blue.
- His brushstrokes reflect the movement of the sea and skies.

Colour and mood

Warm colours: red, yellow and orange show the emotions of comfort and warmth, though red can symbolise anger.



Cold colours: blue, green and purple can mean calmness or sadness.



Key Vocabulary

- texture
- collage
- colour
- found materials
- layering
- etching
- repeating pattern

Van Gogh 1853 - 1890

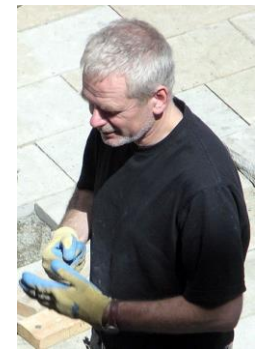


- Van Gogh was a Dutch artist who sadly was not recognised for his work whilst he was alive
- He is now recognised as one of the most important western artists of all time
- He drew and painted over 2000 pictures in the last 2 years of his life
- He died penniless at the age of 37



Andy Goldsworthy 1956 -

- Goldsworthy is a British sculptor, photographer and environmentalist.
- He likes to use found materials in his work, including brightly coloured flowers, icicles, leaves, mud, pinecones, snow, stone, twigs, and thorns.



Van Gogh used thick paint for his work to create texture. The brush strokes are considered to be as important as the colour.