

Paul Nash 1889 - 1946 -



- Nash was a British surrealist painter and war artist, as well as a photographer
- He was among the most important landscape artists of the first half of the twentieth century.
- He played a key role in the development of Modernism in English art.
- His WWI inspired art is his most famous work



Pastels - Techniques

OIL PASTEL TECHNIQUES

LIGHT PRESSURE BLENDING 	HEAVY PRESSURE BLENDING
SCUMBLING 	MAKE A VALUE FROM LIGHT TO DARK
SGRAFFITO 	STIPPLING
BLEND TWO COOL COLORS 	BLEND TWO WARM COLORS

GLOSSARY:
 BLEND = MESCOLARE, AMALGAMARE, FONDERE un colore nell'altro
 SCUMBLE = SFUMARE CON SCARABOCCHI
 VALUE = GRADAZIONE TONALE
 SGRAFFITO = GRAFFITO, INCISIONE
 STIPPLE = DISEGNARE CON PUNTINI ACCOSTATI

Key Vocabulary

- war art
- oil pastel
- layering
- charcoal
- depth
- landscape
- observational
- drawing
- avant-garde
- surrealism



Mixed media

Which medium is best to create a 3D poppy?

YEAR 5
Term 2

Mixed media

- Mixed media describes artwork in which more than one medium or material has been employed.
- Assemblages, collages, and sculpture are three common examples of art using different media.
- Art can be made of anything or any combination of things.
- Experimentation is key to get the best effects

Joining

- Joining mixed media may require a number of different approaches depending on the materials to be joined e.g. glue, stitching, taping, score and slip.

Background

- The background can be just as important as the foreground, so needs to be carefully considered
- Is a background required?

Key Vocabulary

- botanical drawing
- mixed media
- sculpture
- 3D
- experiment
- joining
- background



David Hockney

How did Hockney create an impression of water?

Key Vocabulary

David Hockney - 1937

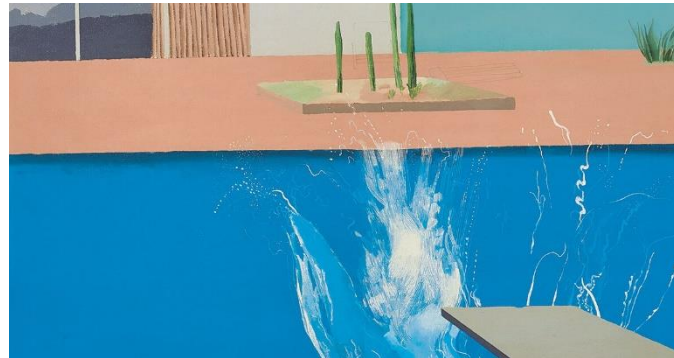


- Hockney is an English artist and an important contributor to the Pop Art movement
- He is considered to be one of the most influential British artists of the 20th century
- In 1964, Hockney moved to Los Angeles, where he became fascinated by water, making a series of paintings of swimming pools.
- He used printmaking for much of his work, in the form of etchings and lithographs

Pop Art

- Pop Art was a style of art in the 1960s that was bright, full of colour as they felt that up until this time, art did not represent the younger generation.
- Influential pop artists, include Andy Warhol and Roy Lichtenstein

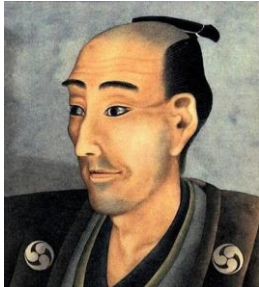
- Pop Art
- etching
- lithograph
- printing
- lino printing
- pen and ink
- layering
- modernism



Key Vocabulary

ukiyo-e
diorama
printing
woodblock
layers
depth
3D
joining
attaching

Hokusai 1760 - 1849



- Hokusai was a Japanese ukiyo-e artist of, active as a painter and printmaker
- Hokusai was instrumental in developing *ukiyo-e* from a style of portraiture to landscapes, plants and animals
- His woodblock series *Thirty-six Views of Mount Fuji*, includes his most famous work, *The Great Wave off Kanagawa*

Ukiyo-e

- Ukiyo-e is a genre of Japanese art which flourished from the 17th through 19th centuries.
- Its artists produced woodblock prints and paintings of such subjects as female beauties, actors and sumo wrestlers; scenes from history and folk tales; travel scenes and landscapes.
- The term *ukiyo-e* translates as "picture of the floating world".



A diorama is a replica of a scene, typically a three-dimensional full-size or miniature model.

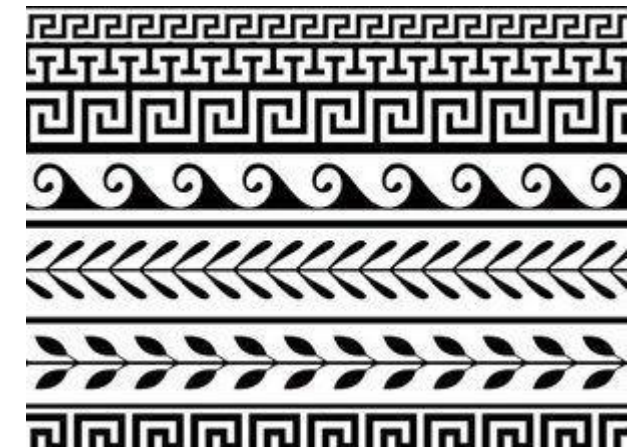
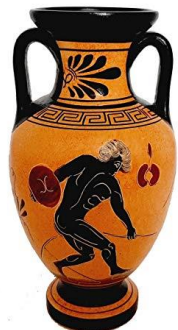


Key Vocabulary

- tondo
- pottery
- geometric pattern
- border silhouette

Tondos

- A tondo is a round work of art, a circular painting. The name is Italian, but the Greek designs were much earlier than this.
- Greek tondos were used to depict mythological scenes on pottery
- Like much Greek pottery, only two colours were frequently used, black and orange, usually a black background with an orange image, though this is sometimes reversed
- Often the tondo is edged with geometric patterns



Ancient Egyptian Portraits

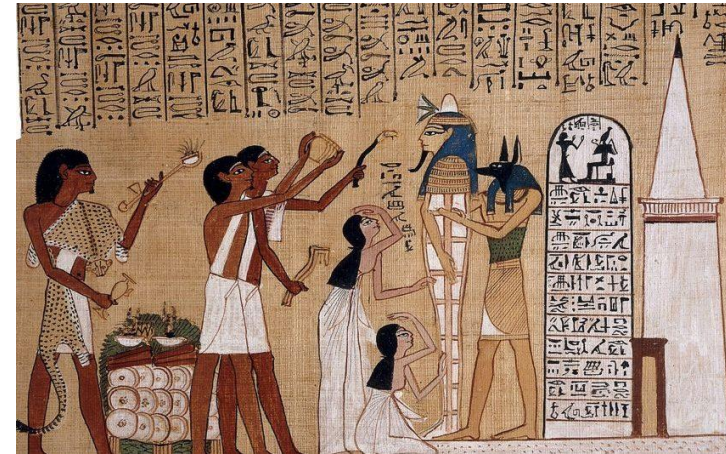
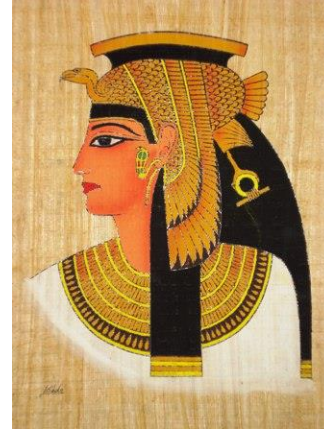
Why were Egyptian portraits always in profile?

Key Vocabulary

- portrait
- profile
- mixed media
- frieze
- composite
- 2 dimensional

Ancient Egyptian Portraits

- The Egyptians drew scenes with a two-dimensional perspective. You will see people standing sideways limbs, face and waste in profile but with the shoulders and eyes to the front.
- They sought to provide the most representational aspects of each person rather than aspiring for realism. At a glance, the viewer would be able to see all the elements that were most important, from the most recognizable angle and then grouped together to create the whole. Through this “mashup” they sought to convey complete information on a scene all in a single viewpoint.
- Many Egyptian artworks include hieroglyphics. There are over 700 recorded hieroglyphs.



A		H		N		U	
B		I		O		V	
C		J		P		W	
D		K		Q		X	
E		L		R		Y	
F		M		S		Z	
G				T		SH	

