

Ancient Egyptian Portraits

Why were Egyptian portraits always in profile?

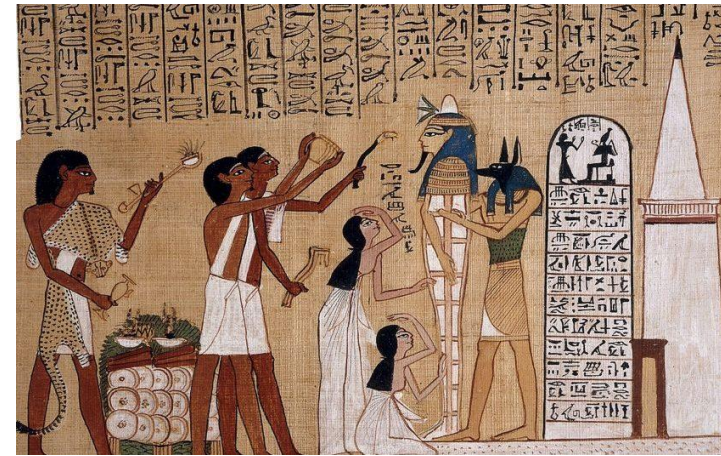
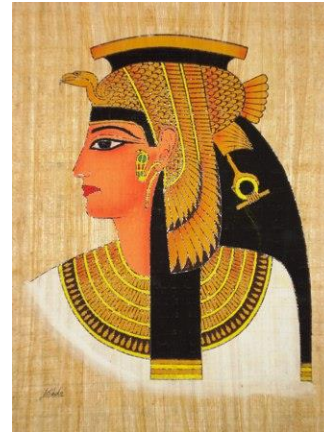
YEAR 5
Term 6

Key Vocabulary

- portrait
- profile
- mixed media
- frieze
- composite
- 2 dimensional

Ancient Egyptian Portraits

- The Egyptians drew scenes with a two-dimensional perspective. You will see people standing sideways limbs, face and waste in profile but with the shoulders and eyes to the front.
- They sought to provide the most representational aspects of each person rather than aspiring for realism. At a glance, the viewer would be able to see all the elements that were most important, from the most recognizable angle and then grouped together to create the whole. Through this “mashup” they sought to convey complete information on a scene all in a single viewpoint.
- Many Egyptian artworks include hieroglyphics. There are over 700 recorded hieroglyphs.



A		H		N		U	
B		I		O		V	
C		J		P		W	
D		K		Q		X	
E		R		Y			
F		L		S		Z	
G		M		T		SH	

